

Welcome

A GUIDE FOR NEW RESIDENTS



Village of
ROYAL PALM BEACH
Florida

"A Place We Call Home"



(561) 790-5100



@VillageRoyalPalmBeach



1050 Royal Palm Beach Blvd

CONTENTS

Welcome

03 Message From the Clerk

Our Community

04 Hours of Operation

05 Village Council

06 Communication

07 Code Enforcement

Essential Services

08 Building Department & Utilities

Parks and Recreation

09 Signature Events

10 Parks and Amenities

11 Parks and Amenities

Hurricane Preparedness Guide

12 Before the Storm

13 Understanding the Storm

14 During and After the Storm

15 Know Your Flood Zone

16 Build Responsibly/Flood Insurance

Supplemental Information

17 Numbers to Keep

18 Village Maps

19 Village Maps

Welcome to Royal Palm Beach

"A Place We Call Home"

Dear New Resident,

On behalf of the Mayor, Council and Village Manager, it is my pleasure to welcome you. We are proud of our Village and we are glad you made the choice to call Royal Palm Beach home. As you settle into your new surroundings, we hope you are finding your way around the community, meeting new neighbors and friends, and enjoying all the amenities that Royal Palm Beach has to offer. Enclosed is some information you may find useful in establishing yourself as a resident.

The Village of Royal Palm Beach was incorporated in 1959 and is the 10th largest city in Palm Beach County. The Village covers nearly 12 square miles and is home to more than 20 beautiful parks. The Village Council and staff work very hard to provide our residents with the highest level of service in all that we do. We strive to maintain a "small-town feel" while still providing a variety of recreation and leisure activities, facilities, and programs that are usually reserved for larger cities.

Again, welcome to the Village of Royal Palm Beach and we are proud that you chose to become a member of our community. Please do not hesitate to reach out to your local government should the need arise.

Sincerely,



Diane DiSanto, MMC

Village Clerk



The Village of Royal Palm Beach Facilities



Hours for Village Hall

1050 Royal Palm Beach Boulevard, Royal Palm Beach, FL 33411

Village Hall Lobby/Clerk's Office

Monday - Friday, 8:00 AM to 5:00 PM

Phone: 561-790-5100

Planning & Zoning

Monday - Friday, 8:00 AM to 5:00 PM

Phone: 561-790-5131

Building Department

Monday - Friday, 8:00 AM to 4:30 PM

Phone: 561-790-5128

Post Office

Coming Soon!

Hours for Village Facilities

Commons Park Sporting Center

11600 Poinciana Boulevard, Royal Palm Beach, FL 33411

Daily, 8:00 AM to 9:00 PM

Phone: 561-790-5140

Cultural Center

151 Civic Center Way, Royal Palm Beach, FL 33411

Office Hours: M-Fri, 8:00 AM to 9:00 PM

After hours by appointment only

Phone: 561-790-5196

Recreation Center

100 Sweet Bay Lane, Royal Palm Beach, FL 33411

Office Hours: M - Fri, 8:00 AM to 5:00 PM

Phone: 561-790-5124

Building Hours:

Monday - Friday, 8:00 AM to 9:00 PM

Saturday, 8:00 AM to 5:00 PM

Closed on Sunday



[village-of-royal-palm-beach/](https://www.village-of-royal-palm-beach.com/)



@RoyalPalmBeach



@VillageRoyalPalmBeach



@VillageofRoyalPalmBeach, Florida

Government

The Village of Royal Palm Beach operates under the Council-manager form of government. This system of local government combines the strong leadership of elected officials with the strong managerial experience of an appointed municipal manager.

Mission Statement: The mission of the Village of Royal Palm Beach Mayor and Council is to represent the public interest, promote quick, courteous response to residents' problems, provide leadership and direction to the Village's future, and assure the present and future fiscal integrity of the municipal government. The Village of Royal Palm Beach strives to provide its citizens with a clean, safe, family-oriented community.

Royal Palm Beach Village Council - <https://royalpalmbeachfl.gov/villagecouncil>



Mayor
Fred Pinto

Vice Mayor
Jeff Hmara

Councilwoman
Selena Samios

Councilwoman
Jan Rodusky

Councilman
Richard Valuntas

The Mayor and Council members are selected to represent the citizens of the community and to develop policy that is responsive to community needs and wants. The Mayor and four Council members are selected at large and each serve a two year term. The Mayor and Village Council welcome comments, suggestions, and ideas from all of the residents and business people of Royal Palm Beach. Please feel free to contact the Mayor and Village Council at your convenience.

Boards and Commissions - <https://royalpalmbeachfl.gov/bc>

The Village has several advisory boards whose members are residents appointed by the Village Council. Appointments for vacant positions are typically done each March.

- Education Advisory Board
- Recreation Advisory Board
- Planning and Zoning Commission
- Program for Public Information Committee

If you are interested in serving on a board, please visit <https://www.royalpalmbeachfl.gov/bc/webform/online-volunteer-board-application> to fill out the online volunteer board application.

Communication

In addition to being just a phone call, email, or visit away, we would like to provide you with all the ways the Village of Royal Palm Beach communicates with its residents:

Social Media -    

The Village utilizes Facebook, Instagram, Twitter, and LinkedIn to keep our residents up to date with events and important announcements. You will find posts regarding garage sales, Friday Night Concerts, and even youth and senior programs. Don't forget to click that like and follow button to stay up to date!

Village Website - www.royalpalmbeachfl.gov

Explore the official website of the Village of Royal Palm Beach to delve deeper into your local government, discover upcoming events, public meetings, Village services, access agendas, and even get in touch with your Mayor and Council! Our website reflects the Village's strong dedication to maintaining effective communication with residents, while also providing visitors with a glimpse into the outstanding level of services and quality of life that our community offers. Our main goal is to enhance the lives of our residents and visitors within our community.



By clicking on the envelope icon located in the bottom right hand corner of the website's homepage (shown above), residents and other interested parties can subscribe to receive via email the Mayor's Vector, a monthly publication from the desk of Mayor Fred Pinto, Village Breaking News, Bid and RFP Notices, Canal Maintenance Alerts, General News and Announcements, Village Calendar Events, and Council Meeting Notifications.

Community Connections Magazine - Digital & Print

www.royalpalmbeachfl.gov/clerk/page/community-connections-magazine

The voice of the Village, the Community Connections magazine is produced 3 times yearly: Fall, Winter/Spring, and Summer. Print editions are available for pick up at Village facilities and the digital version is available year round on the Village website under programs and activities or by clicking on the section title above.

CodeRED Alert System

The Village of Royal Palm Beach uses CodeRED to send EMERGENCY notifications by phone, email, text and mobile alerts to cell phones to keep citizens informed of emergencies such as an evacuation, utility outage, water main break, fire or flood, chemical spill, or other emergency situations.

The Village may also activate CodeRED to send GENERAL notifications to registered subscribers to communicate non-life safety matters, such as planned road closures, water main repairs, water service interruptions, etc. You may also sign-up to receive GENERAL alerts if you would also like to receive these types of notifications.

There is no charge to register for or use CodeRED and personal information is kept confidential.

Registering for CodeRED is quick and easy:

- Text RPB or rpb to 99411 to enroll in CodeRED public safety alerts
- Add the CodeRED phone number to your Caller ID - 866.419.5000 is for EMERGENCY CALLS
- Add the CodeRED phone number to your Caller ID - 855.969.4636 is for GENERAL CALLS
- Click on the CodeRED logo to the right to sign up online



Alternative Information

In 2023, the Village of Royal Palm Beach updated all of the digital signs located throughout the Village. Our new digital signs run 24 hours a day and are updated frequently. They display important information such as dates and times for meetings and events, emergency messaging, youth and senior programs, and any other messaging that is relevant to the general public. The Village also broadcasts the same information on Channel 18 and Uverse Channel 99.

Code Enforcement

Mission Statement

The mission of the Code Enforcement Department is to provide value-added quality-of-life services and response to the community through the preservation of neighborhoods, enhancement of its commercial areas, blight prevention, and protection of the health, safety, and welfare of its residents through a customer-service based approach.

The Code Enforcement Process

Code Enforcement is governed by Chapter, 162, Florida Statutes. The following is a brief description of how code enforcement works. Please note, according to Section 162.06(1)(b), Florida Statutes, **NO ACTION** will be taken on anonymous complaints.

When a complaint is received the inspector will go and investigate the complaint, usually within 24 hours.

When a violation is observed by either complaint or self initiated:

- A **Friendly Reminder** is written and hung on the door where the violation is observed. The Friendly Reminder gives 10 days to correct the violation.
- After 10 days a re-inspection occurs, if the violation has not been corrected a **Violation Notice** is then written and mailed to the property owner listed in the **County Tax Collector's** database **Certified Mail Return Receipt Requested** and the property owner is given more time to correct the violation. After the additional time has passed another re-inspection occurs.
- If the violation still has not been corrected a **Notice of Hearing** is then mailed out to the property owner **Certified Mail Return Receipt Requested**. The Case is then heard by the **Special Magistrate** at a violation hearing to determine if a violation did/or does exist, an additional amount of time to correct the violation, and how much if any fine will be imposed.
- After the additional time has passed from the violation hearing and the violation is not corrected then the case is heard again by the Special Magistrate at the **Fine Assessment Hearing** to impose a fine. The Fine Assessment Order is recorded in the Official Records of Palm Beach County, Florida as a lien.

Frequent Code Violations



Animal Regulations



Mowing & Landscape Maintenance



Illegal Accumulation, Disposal & Dumping



Illegal Parking



Appearance Standards



Illegal Signs



Performing Work Without a Permit

A complete list of commonly violated codes can be downloaded [here](#).

How to Report a Code Violation

- Formal Written Forms - Formal written forms are available for download online and are also available at the Royal Palm Beach Village Hall.
- Online – Use our Citizen Support Center to file a complaint online.
- Phone – To file a complaint by phone, call the Village of Royal Palm Beach Code Enforcement Department at 561-790-5138.

Building Department

Mission Statement

The mission of the Building Department is to protect the public safety, health, and general welfare through the administration and enforcement of the Florida Building Code and the Village Code of Ordinances.

Department Functions

- Building inspections
- Issuance of building permits
- Issuance of certificates of occupancy
- Review of construction plans for permitting

Contact Information

Phone - 561-790-5128

Fax: - 561-790-5129

Village Ordinances - <https://www.royalpalmbeachfl.gov/villagecode>

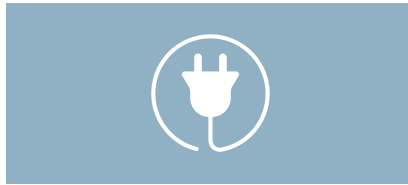
Essential Services



Water and Sewer

Palm Beach County
Water Utilities District
561-740-4600

South of Southern Blvd
Village of Wellington
Water Utilities
561-791-4037



Electricity

Florida Power & Light (FPL)
561-697-8000
www.FPL.com



Trash/Recycling

Waste Pro
www.wasteprousa.com
561-688-8912



Anne M. Gannon Constitutional Tax Collector Palm Beach County

Westlake Service Center
561-355-2264
16440 Town Center Parkway South
Westlake, FL 33470



US Postal Service

Coming Soon to
Village Hall!



Palm Beach County Sheriff's Office

District 9
11498 Okeechobee Blvd.
Royal Palm Beach, FL 33411
Emergency - 911
Main Line - 561-904-8219



Palm Beach County Fire Rescue

Station 28 - 561-790-6101
1040 Royal Palm Beach Blvd
Station 29 - 561-790-6067
10055 Belvedere Road
Emergency - 911

Signature Events

The Village of Royal Palm Beach holds five signature events annually at Commons Park. Signature events are Winter Fest, West Fest, Seafood Fest, 4th of July, & Rock-n-Fall Fest. All events are FREE to attend and include a kids' fun zone, food and drink vendors, arts and crafts, live music, and more!



Parks and Amenities

All Parks and Facilities are Handicap Accessible

COMMONS PARK (160 Acres) 11600 Poinciana Boulevard

Features a ten acre great lawn, a fifteen acre lake, sporting center facility, banquet garden, wedding pavilion, two playscapes, interactive fountain, café, walking paths, two large picnic pavilions with grills, twenty small picnic pavilions, two volleyball courts, golf driving range, putting course, short game area, disc golf, bike rentals, dog park and so much more!

PENZANCE PARK (1 Acre) 10100 Penzance Lane

Fishing dock, playscape and park benches.

GRANDVIEW LINEAR PARK (2 Acres) Grandview Way

Park benches and walkway.

MOONLIGHT PARK (1 Acres) 1041 Moonlight Way

Playscape, gazebo with picnic tables and park benches.

FERRIN MEMORIAL PARK (8 Acres) 11921 Okeechobee Boulevard

Three lighted softball fields complex with restroom/concession facility and walking trail.

PINE ROAD PARK (5 Acres) 2700 Pine Road

Paved walking path, two basketball courts, two small picnic pavilions, neighborhood dog park and open areas.

VETERANS PARK (5 Acres) 1036 Royal Palm Beach Boulevard

Playscape, swings, interactive fountain, café, ice cream parlor, amphitheater, walking path, waterfall, two large picnic pavilions with grills, eight small gazebos, outdoor classroom, two restroom facilities and parking for 110.

LINDSAY EWING PARK (4 Acres) Linnet Lane

Baseball field, multi-purpose field, pavilion and restroom facility.

VILLAGE HALL (16 Acres) 1050 Royal Palm Beach Boulevard

Administration, Building Department, Code Enforcement, Planning & Zoning, Engineering, Palm Beach County Sheriff's Office District 9 and Palm Beach County Fire Rescue Station 28.

HOMEPLACE PARK (3 Acres) Grandview Circle

Playscape, pavilion, fishing dock, basketball court, benches, dog park and open areas.

Parks and Amenities

CULTURAL CENTER (8 Acres) 151 Civic Center Way

16,500 sq. ft. building with a large Grand Ball Room, four multi-purpose banquet rooms and two kitchens. Facility is available for rentals.

PRESERVATION PARK (83 Acres) 100 Sweet Bay Lane

33,000 sq. ft. Recreation Center with a gymnasium, seven multi-purpose rooms and weight room. This park also contains pickleball courts, one lighted skateboard park, six lighted soccer/football fields with concession, playscape, four lighted basketball courts, and an off-road bike and walking trail through a twenty acre natural area.

WETLAND PARK (10 Acres) Crestwood Blvd. South

Paved walking trail, park benches and boardwalk.

LAKESIDE CHALLENGER PARK (4 Acres) 701 Royal Palm Beach Boulevard

A passive park with one gazebo, a fishing dock, park benches and a restroom facility.

CAMELLIA PARK (8 Acres) 6845 Camellia Park Drive

Two softball fields (one lighted), six lighted tennis courts, four bocce courts, one sand volleyball court, playscape, pavilion, four racquetball courts and a restroom facility.

BOBBIE JO LAUTER PARK (2 Acres) 179 Sandpiper Avenue

A passive park with benches, bike racks, two picnic pavilions and playscape.

BOB MARCELLO BASEBALL COMPLEX (23 Acres) 100 Wildcat Way

Eight lighted baseball fields, one lighted basketball court, two lighted tennis courts, picnic pavilion, jogging trail, two playscapes and three restroom facilities, three pavilions and concession facilities.

H.L. JOHNSON (9 Acres) 3701 Royal Palm Beach Boulevard

Nature trail/exercise stations and park benches.

EARTHDAY PARK (2 Acres) 135 Rivera Avenue

A passive park with large pavilion and park benches.

TODD A. ROBINER PARK (6 Acres) 350 Las Palmas Avenue

Four sand volleyball courts, two basketball courts, playscape, picnic pavilion, new restroom facility with an outside shower, fishing dock and a doggie "Bark Park".

PIPPIN PARK (2 Acres) Pippin Lane

Fishing dock, canoe/kayak launch, picnic pavilion, dog park, basketball court, playscape and two barbeque grills.

HURRICANE PREPAREDNESS GUIDE



KEEPING AN EYE ON THE STORM

Atlantic Hurricane Season Runs June 1st- November 30th

Hurricane hazards come in many forms, including storm surge, heavy rainfall, inland flooding, high winds, tornadoes, and rip currents. As residents of The Village of Royal Palm Beach, the storm surge and rip currents may not be of great concern but the heavy rainfall, inland flooding, high winds, tornadoes definitely are. The best way to deal with these hazards is to be prepared. If you are not already prepared, now is the time to prepare your family and property for a storm event. The best way to keep you and your family safe is to be prepared.

Before the Storm

- Fuel up vehicles and charge cell phones
- Double check supplies (Food, water, cash, medications, etc...)
- Install shutters and bring outdoor furniture indoors
- Monitor local news for watches and warnings (A “watch” means that storm conditions are possible for the area, a “warning” means that storm conditions are expected for the area.)

Sign up to Receive Village Updates: Residents can receive email and text message updates from the Village of Royal Palm Beach by signing up for Code Red. **Registering for CodeRED is quick and easy:**

- Text RPB or rpb to 99411 to enroll in CodeRED public safety alerts
- Add the CodeRED phone number to your Caller ID - 866.419.5000 is for EMERGENCY CALLS
- Add the CodeRED phone number to your Caller ID - 855.969.4636 is for GENERAL CALLS

Residents can sign up to be notified by email, text message or both for emergency alerts pertaining to emergency situations (i.e. hurricanes).

Palm Beach County is in charge of evacuation and recovery actions after a storm. State and federal agencies and their staff provide necessary assistance, but the County will retain control over all evacuation and recovery actions.

Go to Palm Beach County Hurricane Preparedness website for information about flood warning signals, for additional flood safety and property protection precautions, shelter locations, special needs and pet-friendly shelters, and transportation assistance.



HURRICANE PREPAREDNESS GUIDE

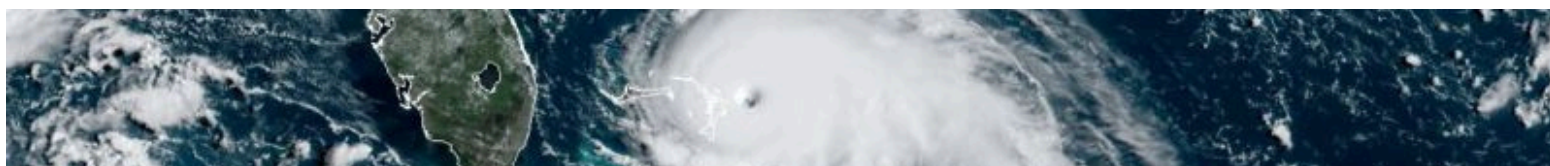


KEEPING AN EYE ON THE STORM

Understanding the Storm Watch Versus Warning

A Hurricane Watch means hurricane conditions (sustained winds of at least 74 mph) are possible in the watch area within 48 hours.

A Hurricane Warning means hurricane conditions (sustained winds of at least 74 mph) are expected in the warning area in 36 hours or less



The Saffir - Simpson Hurricane Wind Scale

Category 1 Winds - 74 - 95 mph	Category 2 Winds - 96 - 110 mph	Category 3 Winds - 111 - 129 mph	Category 4 Winds - 130 - 156 mph	Category 5 Winds - >157 mph
Very dangerous winds will produce some damage: Well-constructed frame homes could have damage to roof, shingles, vinyl siding and gutters. Large branches of trees will snap and shallowly rooted trees may be toppled. Extensive damage to power lines and poles likely will result in power outages that could last a few to several days.	Extremely dangerous winds will cause extensive damage: Well-constructed frame homes could sustain major roof and siding damage. Many shallowly rooted trees will be snapped or uprooted and block numerous roads. Near-total power loss is expected with outages that could last from several days to weeks.	Devastating damage will occur: Well-built framed homes may incur major damage or removal of roof decking and gable ends. Many trees will be snapped or uprooted, blocking numerous roads. Electricity and water will be unavailable for several days to weeks after the storm passes.	Catastrophic damage will occur: Well-built framed homes can sustain severe damage with loss of most of the roof structure and/or some exterior walls. Most trees will be snapped or uprooted and power poles will be downed. Fallen trees and power poles will isolate residential areas. Power outages will last weeks to possibly months. Most of the area will be uninhabitable for weeks or months.	Catastrophic damage will occur: A high percentage of framed homes will be destroyed, with total roof failure and wall collapse. Fallen trees and power poles will isolate residential areas. Power outages will last for weeks to possibly months. Most of the area will be uninhabitable for weeks or months.

**Information obtained from the National Hurricane Center www.noaa.gov

During the Storm

- Stay indoors
- Turn off and unplug unnecessary electrical appliances
- Stay away from windows and doors
- Monitor local news for storm updates

After the Storm

- Stay indoors until the weather is clear (Do not go outside during the “eye” of the storm.)
- Continue to monitor local news for updates
- Verify that no boil water notice is in effect for your area before drinking tap water.
- Avoid traveling on roadways. There may be electrical wires down and debris in the roadway that could be very dangerous for drivers.
- Do not use generators indoors!

Debris Removal

Following a Hurricane, storm related debris will be removed from Rights-of-way within the Village and Village owned lands and all areas that currently have curbside garbage pickup. This includes gated communities with curbside pickup but does not include communities with dumpster service. Care should be taken to not place debris in locations that's will block storm water drainage or block access to utilities such as water, electric, cable, or mail services.

Storm Shutters on Vacant Properties

If you are planning to be out of town during Hurricane Season shutters can be installed on unoccupied properties with the permission of the Community Development Department. Permission can be obtained by filling out the STORM PROTECTION EXTENDED DURATION NOTICE form available online or at Village Hall.

Boil Water Notices

If during a storm event the water system loses power or water pressure a boil water notice may be issued for the affected area. Do not consume tap water during this time. Tap water can be served after being brought to a rolling boil for 1 minute. An alternative method would be to add 8 drops of unscented household bleach to a gallon of water and waiting 30 minutes before consuming.

Community Development Services

Before a storm event residents may contact the Community Development Department for advice on best securing and protecting their property as well as preparing for limited services and resources. Community Development staff will canvas the Village to notify contractors and residents to secure any materials which may become hazards in the event of landfall.

After a storm event Community Development teams will strategically survey the entire Village and provide damage assessment reports and evaluate if any structures have been damaged to the degree which would render them unable to be occupied.

Community Development will provide expedited manual permitting in the event of power outages and can be reached at the Village Hall location and by telephone 561-790-5128.

Build Responsibly! Always check with the Village before you alter, re-grade, or bring fill onto your property to make sure you don't cause drainage problems for you or your neighbors. If you suspect illegal development, please call 561-790-5128.

Build Responsibly

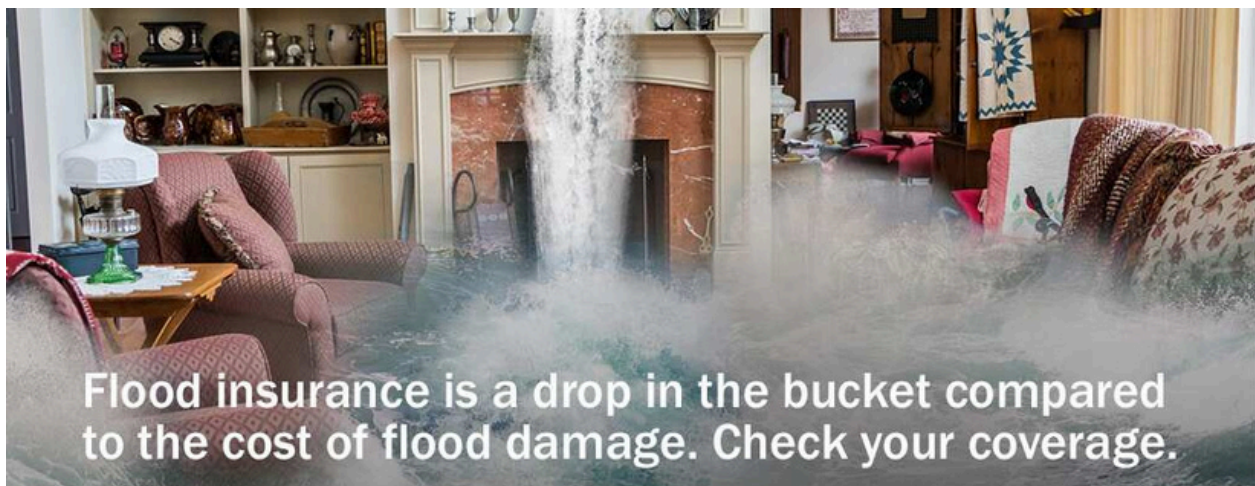
- No construction, including the moving of earth, is allowed in the floodplain without a permit.
- Always check with the Village before you alter, re-grade, or bring fill onto your property to make sure you don't cause drainage problems for you or your neighbors.
- If you are aware of construction taking place illegally, please call 561- 790-5128.

Purchase a Flood Insurance Policy Today!

You need to know that you can take steps to protect your financial security before disaster strikes. However, many residents and businesses are unaware that they qualify for flood insurance or that policies are more affordable than they may think.

The following are important facts and figures for residents so that they better understand the risk of flooding, its impact, and how flood insurance can help reduce the financial impact of flooding:

- There is usually a 30-day waiting period for flood insurance to take effect.
- More than 20 percent of all flood claims are for properties located outside of high-risk flood areas.
- Federal disaster assistance is usually provided in the form of a loan that must be paid back with interest along with any existing mortgage.
- Property owners, renters, and business owners in the Village of Royal Palm Beach can purchase flood insurance on their buildings and contents.
- Call your insurance agent today or go to www.FloodSmart.gov , or call 800-427-4661 to find an agent and to find out more about protecting your property from rising waters.
- You should consider the purchase of flood insurance whether your property is in a Special Flood Hazard Area or not.
- Flood insurance is available for your building and for the contents. Renters should buy flood insurance for their belongings.
- You can call the Village of Royal Palm Beach for flood insurance advice at 561-790-2612.



Flood insurance is a drop in the bucket compared to the cost of flood damage. Check your coverage.

#BeInformed

Ready 

KNOW YOUR FLOOD ZONE

Call the Village of Royal Palm Beach's Engineering Department at 561-790-2612 for access to FEMA's Flood Insurance Rate Maps (FIRM) and elevation certificates on file for the Village, and to learn if a property is in a Special Flood Hazard Area, and if it may be affected by local drainage problems, or is in an area that has previously had flooding problems, and to see if your property is located near an area that should be protected because of its natural floodplain functions. Check your flood zone using an interactive map @ www.royalpalmbeachfl.gov/floodlookup

Know How to Protect Your Property

- There are practical and cost effective methods for reducing or eliminating your property's exposure to flooding.

- Electrical panel boxes, A/C condensing units, and other appliances should be elevated above ground level.
- Check your building for water entry points such as doors, low windows, and dryer vents.
- Dry flood proofing includes sealing or waterproofing with special materials and compounds which provide a chemical or physical barrier against water intrusion during times of flooding.
- Search the Palm Beach County library catalog for "Flood" information. Go to FEMA's website www.ready.gov/floods.
- Village staff is available to provide property protection consultations including site visits and drainage evaluations on your property. Call the Engineering Department at 561-790-5103 for advice.

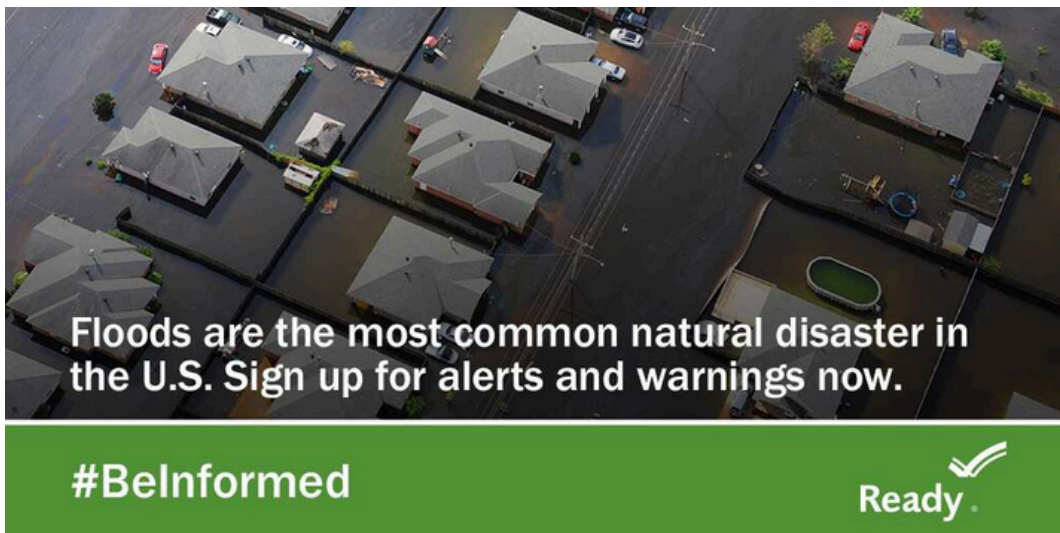
Flood Warning

Understand our local alert notification systems and know what you should do, so you are prepared to take actions to protect yourself and your property when flooding is imminent. Residents should be aware that Royal Palm Beach is directed by Palm Beach County Emergency Management Division who will advise our community of impending storms and flood threats. For more information about emergency notification, go to the Palm Beach County website at www.pbcgov.com.

You will be notified of flood watches (when conditions are likely for flooding) and warnings (flooding is imminent) by local television and radio stations. You should also monitor the weather Channel and have a NOAA weather radio on-hand with extra batteries.

Stay informed!

- Connect with the Village of Royal Palm Beach on Facebook (@VillageOfRoyalPalmBeach), and Twitter (@_RoyalPalmBeach).
- Go to the Village website at www.royalpalmbeachfl.gov or contact the city at (561)790-5100 to sign up for CodeRED local emergency alerts.
- Watch live, up-to-the-minute live streaming broadcasts or videos on Channel 18.



Numbers to Keep...

Village Manager/Council: 561-790-5103

Frequently Dialed Village Numbers

Athletics Programs - 561-790-5189
 Boat Ramp Permit - 561-790-5100
 Building Permit - 561-790-5128
 Business Tax - 561-790-5128
 Code Enforcement - 561-790-5138
 Commons Park - 561-790-5140
 Cultural Center - 561-790-5192
 Engineering- 561-791-7092
 Finance - 561-790-5112
 Garage Sale Permit - 561-790-5128
 Human Resources - 561-790-5120
 IS Department - 561-791-7078
 Mosquito Control - 561-790-5124
 Parking Fines - 561-790-5100
 Parks - 561-790-3844
 Planning & Zoning - 561-790-5131
 Public Works - 561-790-5122
 Recreation Center - 561-790-5124
 RV Lot Rental - 561-790-5100
 Senior Programs - 561-753-1241
 Seniors Referral Services - 561-790-5188
 Street Light Out - 561-790-5122
 Young-at-Heart - 561-753-1241
 Waste Pro
 Trash/Recycle/Vegetation Service
 561-688-8912
 Water Utility Services - 561-740-4600
 Village of Wellington Water Utilities - 561-791-4010
 (For Residents South of Southern Blvd 33414)



Palm Beach County Numbers

Animal Care & Control - 561-233-1200
 County Clerk of Courts - 561-784-1271
 Driver's License - 561-355-2264
 Homestead Exemption - 561-784-1220
 Library - 561-790-6030
 Non-Emergency Fire/Rescue - 561-616-7000
 Non-Emergency PBSO - 561-688-3400
 Traffic Citations - 561-784-1271
 Property Appraiser - 561-784-1220
 School Board - 561-434-8000
 Senior Information - 2-1-1
 Supervisor of Elections - 561-656-6200
 Vehicle Registration - 561-355-2264

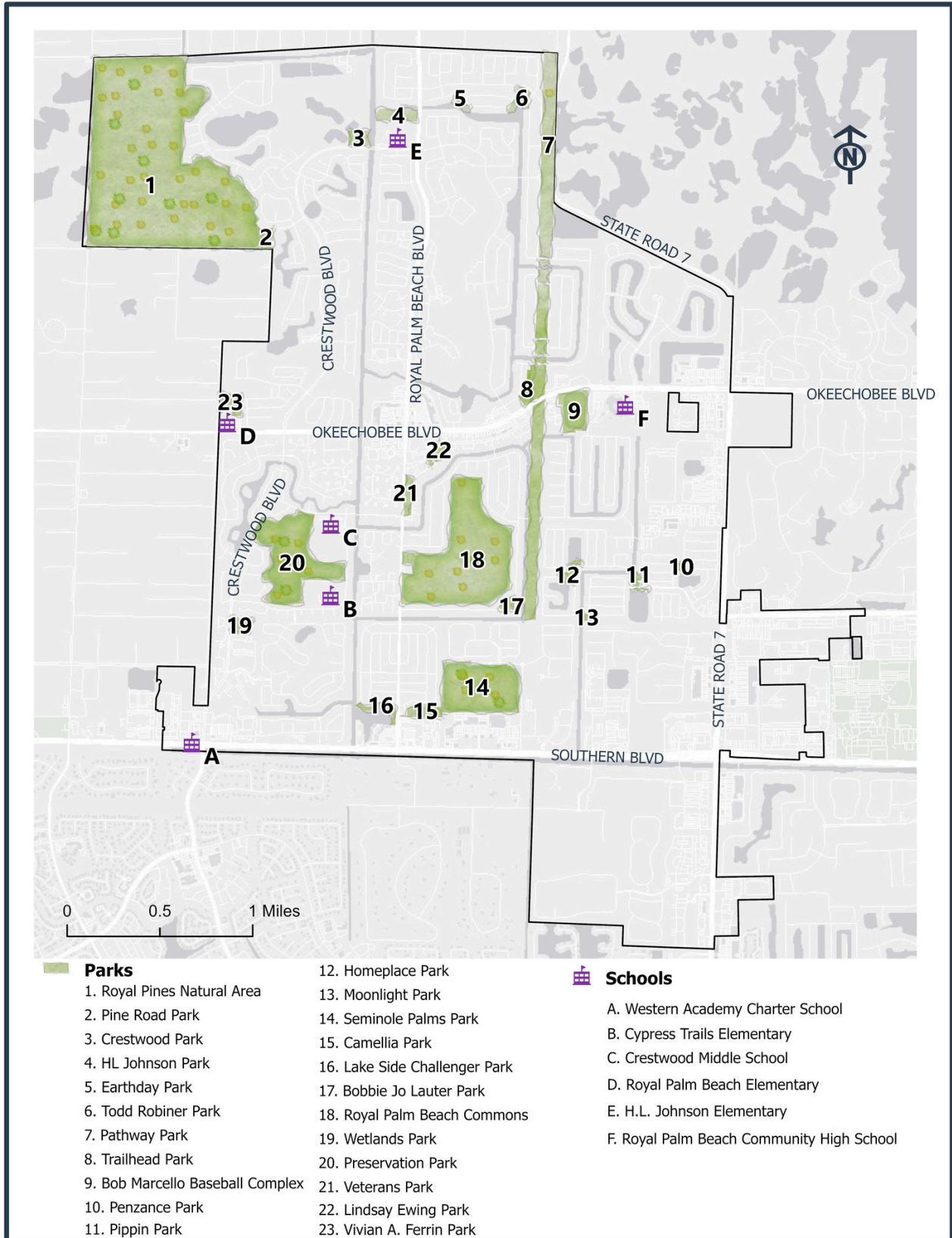
Local Hospitals

Palms West Hospital
 561-798-3300
 Wellington Regional Medical Center 561-798-8500

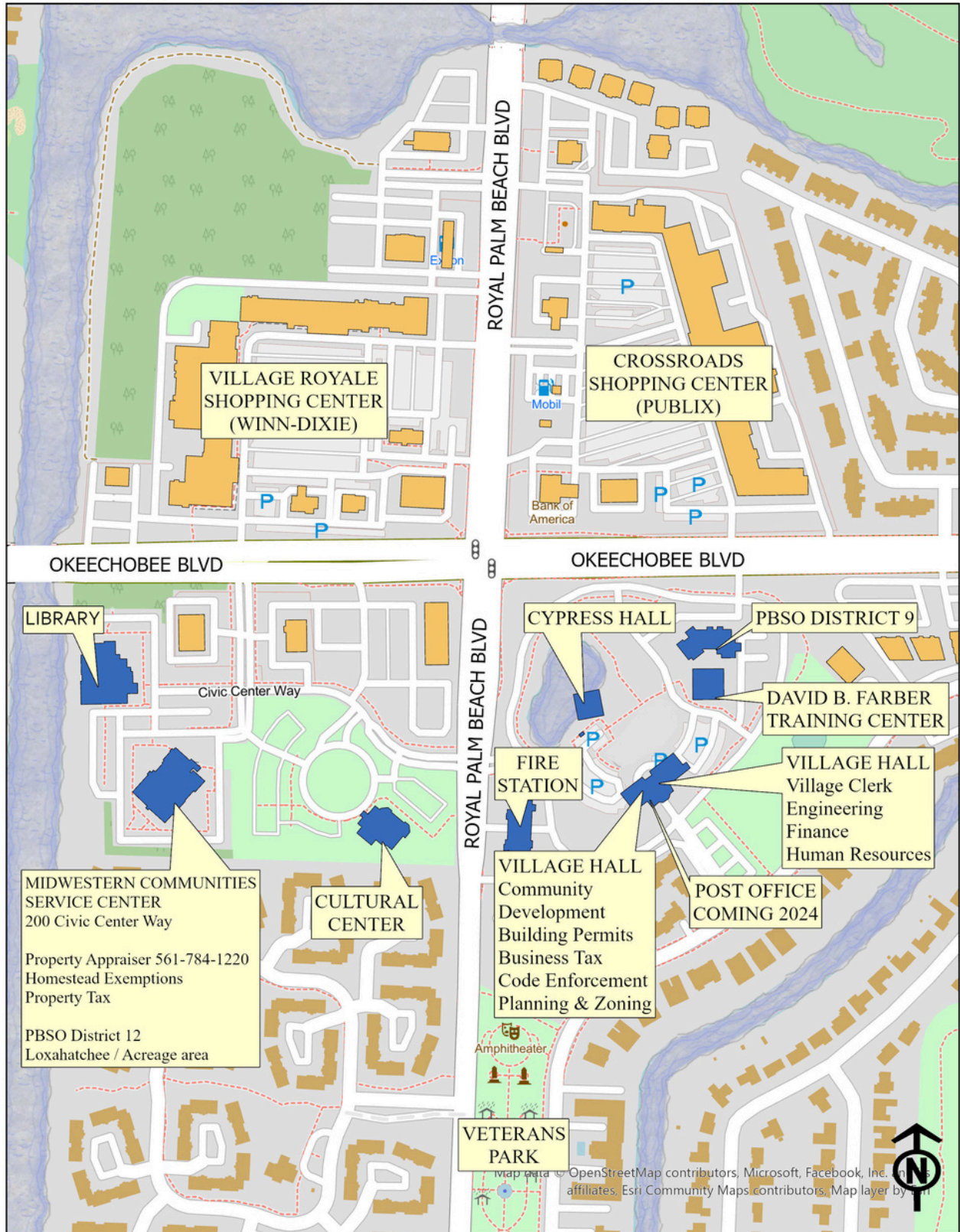
Other Important Numbers

For power outages or to report downed power lines contact FPL - 800-468-8243.
 For debris removal questions, slow or clogged drainage or blocked roadways contact The Village of Royal Palm Beach - 561-790-5100
 For water and sewer issues or outages contact Palm Beach County Water Utilities - 561-740-4600
 Village of Wellington Water Utilities - 561-791-4010
 (For Residents South of Southern Blvd 33414)
 American Red Cross - 561-833-7711
 AT&T Residential - 888-757-6500
 Comcast - 800-COMCAST
 DISH Network - 888-284-7116
 DirecTV - 800-494-4388

Parks & Schools



Village & County Facilities





Village of Royal Palm Beach
1050 Royal Palm Beach Boulevard
Royal Palm Beach, FL 33411
561-790-5100
www.royalpalmbeachfl.gov

